

Membranas - PuROTwist



PuROTwist Membrane (TQ56-50FC)

PuROTwist Membranes

Description	Part #
Q CTA 18 GPD ENC MEMBRANE W/FC	CQ56-18FC
Q TFC 15 GPD ENC MEMBRANE W/ FC	TQ56-15FC
Q TFC 36 GPD ENC MEMBRANE W/ FC	TQ56-36FC
Q TFC 36 GPD NSF ENC MEMBRANE W/ FC	TQ56-36FC/NSF
Q TFC 50 GPD ENC MEMBRANE W/ FC	TQ56-50FC

Membranas Residenciales - Desal



Residential Membranes

Residential - Standard Membrane Elements, Dry

Description	Part #
CTA-10, DESAL 10 GPD CTA-DRY	1201330
CTA-16, DESAL 16 GPD CTA-DRY	1201332
TFM-18, DESAL 18 GPD TFC-DRY	1220188
TFM-24, DESAL 24 GPD TFC-DRY	1220189
TFM-36, DESAL 36 GPD TFC-DRY	1220190
TFM-50, DESAL 50 GPD TFC-DRY	1204694
TFM-75, DESAL 75 GPD TFC-DRY	1204487
TFM-100, DESAL 100 GPD TFC-DRY	1221122
TLC-150, DESAL 50 GPD TFC-DRY	1233581

Residential - Encapsulated, Membrane Elements, Dry

Description	Part #
TFM-18 W/CV W/FLOW CONTROL	1220545
TFM-24 W/CV W/ FLOW CONTROL	1220537
TFM-36 W/CV W/FLOW CONTROL	1220549
TFM-50 W/CV W/ FLOW CONTROL	1220536
TFM-75 W/CV W/ FLOW CONTROL	1223077
TFM-100 W/CV W/ FLOW CONTROL	1225828
TLC-150 W/CV W/ FLOW CONTROL	1234408

Culligan Compatible - Membrane Elements, Dry

Description	Part #
CTA-16-C, OPEN ENDED, (FITS; H5, H53)	1224433
TFM-18-C, OPEN ENDED, (FITS; H8, H83)	1224434
TFM-18-A, (FITS; H8, H83, AC15, AC30)	1224435
TFM-36-A, (FITS; H8, H83, AC15, AC30)	1224436
TFM-50-A, (FITS; H8, H83, AC15, AC30)	1224437

Membranas Comerciales - Desal



Commercial Membranes

Culligan Commercial Compatible - Membrane Elements, Dry

Description	Part #
AG2026TNB 2"x 26" 325GPD TFC CULLIGAN	1206712

10" & 20" Ametek Element - TFC

Description (T = Tape Wrapped)	Part #
AG3308T; 3.3" X 8" TFC 90 GPD; (10" AMETEK)	1206740
HL3308T; 3.3" X 8" TFC 230 GPD (10" AMETEK)	1207232
AK3218T; 3.2" X 18" TFC 460GPD(20" AMETEK)	1206803

AG-Series Tap Water/Brackish RO Elements, Dry - Filmtec Style - (Product Flow @ 225 PSI)

Description	Part #
AG2514TF; 2.5" X 14" 180 GPD TFC; TAPE	1206718
AG2521TF; 2.5" X 21" 300 GPD TFC; TAPE	1206719
AG2540TF; 2.5" X 40" 710 GPD TFC; TAPE	1206729
AG4014TF; 4" X 14" 550 GPD TFC; TAPE	1206748
AG4021TF; 4" X 21" 1050 GPD TFC; TAPE	1206750
AG4040TF; 4" X 40" 2200 GPD TFC; TAPE	1206774
AG4040FF; 4" X 40" 2300 GPD TFC; FIBER	1206761

AG-Series Tap Water/Brackish RO Elements, Dry - Flush Cut - (Product Flow @ 225 PSI)

DESAL[®]

MEMBRANE PRODUCTS

Description	Part #
AG8040F-300; 8"X40" 9000GPD TFC;FIBER	1206779
AG8040F-400; 8"X40" 11000GPD TFC;FIBER	1206784

AK-Series Low Pressure RO Elements, Dry - Filmtec Style - (Product flow @ 107 PSI)

Description (TF = Tape Wrapped, Filmtec)	Part #
AK2514TF; 2.5" X 14" 180 GPD TFC LP-DRY	1220978
AK2521TF; 2.5" X 21" 300 GPD TFC LP-DRY	1206799
AK2540TF; 2.5" X 40" 710 GPD TFC LP-DRY	1206802
AK4014TF; 4" X 14" 550 GPD TFC LP-DRY	1220979
AK4021TF; 4" X 21" 1050 GPD TFC LP-DRY	1206812
AK4040TF; 4" X 40" 2350 GPD TFC LP-DRY	1206816

Description (FF = Fiberglass/w, Filmtec)	Part #
AK2540FF; 2.5" X 40" 710 GPD TFC LP-DRY	1206800
AK4040FF; 4" X 40" 2350 GPD TFC; LP-DRY	1206813

AK-Series Low Pressure RO Elements, Dry - Flush Cut - (Product Flow @ 107 PSI)

Description (F = Fiberglass Wrapped)	Part #
AK8040F; 8" X 40" 9000 GPD TFC; LP-DRY	1206820
AK8040F-400; 8"X 40" 10500 GPD TFC LP-DRY	1206821

Duraslick™ - Low Fouling Membranes - (Operating Pressure 225 PSI)

Description	Part #
RO 2540 DURASLICK 2.5" X 40" 675 GPD	1231055
RO 4040 DURASLICK 4" X 40" 2000 GPD	1231048
RO 8040 DURASLICK 8" X 40" 7700 GPD	1231014

Durtherm® - Hot Water Sanitization - (Maximum Sanitizing Temp 90°C)

Description	Part #
HWS 2521 DURTHERM 2.5" X 21" 270 GPD	1229607
HWS 2540 DURTHERM 2.5" X 40" 630 GPD	1228430
HWS 4040 DURTHERM 4" X 40" 2000 GPD	1228459
HWS 8040 DURTHERM 8" X 40" 9200 GPD	1228481

H-Series Nano Filtration Elements

Description	Part #
HL2521TF, DESAL 380 GPD NANO	1207229
HL2540TF, DESAL 860 GPD NANO	1207231
HL4021TF, DESAL 1280 GPD NANO	1220991
HL4040TF, DESAL 2720 GPD NANO	1220990
HL8040F, NANO MEMBRANE (360SQFT)	1207238
HL8040F-400 NANO MEMBRANE (400SQFT)	1207240

P-Series Ultra Filtration Elements

Description	Part #
PW2540F1080, 2.5" X 40" 2000 GPD UF	1207352
PW4025T, UF 4" X 25" T MILLAPOR REPL-1179	1207368
PW4040T1124; 4" X 40" 8100 GPD UF ELEMENT	1207380
PW4040C1027, 4" X 40" 9200 GPD UF	1207372
PW4040F, 4" X 40" 11000 GPD UF (1052)	1207376
PW8040F; 8" X 40" UF MEMBRANE	1207404
PW8040C, 8" X 40" UF 1061 (47 MIL)	1207399

Series- A- Brackish Water- Membrane Elements

These elements are used for brackish water desalination. The AG4025T elements feature a tape outerwrap and standard feed spacers. The AG8040F elements feature a fiberglass outerwrap and standard feed spacers.



Desal Membranes



Desal Membrane

Duraslick™ Membranes

Osmonics Duraslick™ membrane elements incorporate an innovative membrane design that is significantly smoother, less fouling and more consistent. Benefits include: Less frequent cleaning, reducing energy usage, lower consumption of chemicals and longer element life.

Membranas Comerciales y Residenciales - Filmtec

FILMTEC®
Membranes

Residential Membrane Elements

Description	Part #
1.8"x12" 24 GPD	TW30-1812-24D
1.8"x12" 36 GPD	TW30-1812-36D
1.8"x12" 50 GPD	TW30-1812-50D
1.8"x12" 75 GPD	TW30-1812-75D
1.8"x12" 100 GPD	TW30-1812-100



Tap Water Element Membranes

Tap Water Membrane Elements

Description	Part #
2" x 13" 100 GPD	TW30-2013
2" x 26" 220 GPD; DRY	TW30-2026-DRY
2.5" x 14" 170 GPD	TW30-2514
2.5" x 21" 300 GPD	TW30-2521
2.5" x 40" 660 GPD	TW30-2540
4" x 14" 480 GPD	TW30-4014
4" x 21" 900 GPD	TW30-4021

Tap Water - High Production - Membrane Elements

Description	Part #
4.6" x 11" 1200 GPD	TW30HP-4611
4.6" x 41" 3800 GPD	TW30HP-4641



Filmtec

Tap Water - Extra Low Energy 100PSI - Membrane Elements

Description	Part #
2.5" x 21" 330 GPD	XLE-2521
2.5" x 40" 770 GPD	XLE-2540
4" x 21" 1000 GPD	XLE-4021
4" x 40" 2400 GPD	XLE-4040

Brackish Water Membrane Elements

Description	Part #
2.5" x 40" 660 GPD	BW30-2540
4" x 40" 3200 GPD-LOW ENERGY	BW30LE-4040



Brackish Water Element Membranes

Nano Membrane Elements

Description	Part #
2.5" x 40" 600 GPD	NF90-2540
4" x 40" 1850 GPD	NF90-4040
8" x 40" 7500 GPD	NF90-400

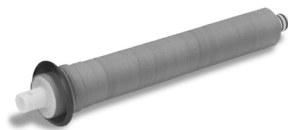
Sea Water Membrane Elements

Description	Part #
2.5" x 14" 100 GPD	SW30-2514
2.5" x 40" 540 GPD	SW30-2540
4" x 21" 600 GPD	SW30-4021
4" x 40" 1500 GPD	SW30-4040
8" x 40" 6000 GPD -HR	SW30HR-320



Sea Water Element Membranes

Membranas Residenciales Compatibles



(TFM-50-A)

Culligan Compatible - Membrane Elements, Dry

Description	Part #
CTA-16-C, OPEN ENDED, (FITS; H5, H53)	1224433
TFM-18-C, OPEN ENDED, (FITS; H8, H83)	1224434
TFM-18-A, (FITS; H8, H83, AC15, AC30)	1224435
TFM-36-A, (FITS; H8, H83, AC15, AC30)	1224436
TFM-50-A, (FITS; H8, H83, AC15, AC30)	1224437

Description	Part #
2" X 26" COMMERCIAL MEMBRANE; 220 GPD	TW30-2026-DRY

Description	Part #
AG2026TF COMMERCIAL MEM. 325 GPD	1206712

Rainsoft Compatible Membranes

Description	Part #
CTA 10 GPD (FITS;9590, 9593, 9594)	CTA RS9-10

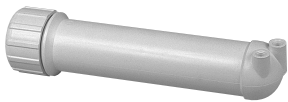
Contenedores de Membrana - Pentek (Antes Ametek)



Pure Quality

Membrane Housings

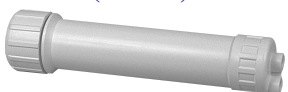
Description	Part #
020-MVH90; M/H; SIDE PORT-WH;1/8"	144376
020-MVH; M/H; STRAIGHT PORT;WH; 1/8"	166000



(144376)

Membrane Housing O-rings

Description	Part #
O-RING #928 FOR SUMP	143483
O-RING #227 FOR CAP	143484



(166000)

Contenedor de Membrana Residencial - Payne



Description	Part #
PRISM M/H; 1/8" FPT STRAIGHT PORT	PPV110
PRISM M/H; 1/8" FPT SIDE PORT	PPV111
PRISM M/H; 1/4" SIDE PORT QUICK WO/CV	PPV111TQ
PRISM M/H; 1/4" SIDE PORT QUICK W/CV	PPV111TQC



Membrane Housings
(PPV110)

1/4" Quick connect fittings available on product & brine ports only, inlet port on cap is 1/4" FPT. "CV" = Check Valve.



Contenedores de Membrana de Fibra de Vidrio - A & M

A & M Composites manufactures a wide selection of reverse osmosis pressure vessels for industrial, commercial, and municipal membrane separation applications.

2.5" 250 PSI, 1/4" FPT End Port

Description	Part #
2.5" X 14"	RO2501
2.5" X 21"	RO2502
2.5" X 40"	RO2503

2.5" 400 PSI, 1/4" FPT End Port

Description	Part #
2.5" X 14"	RO2511
2.5" X 21"	RO2512
2.5" X 40"	RO2513

2.5" 600 PSI, 1/4" FPT End Port

Description	Part #
2.5" X 14"	RO2516
2.5" X 21"	RO2517
2.5" X 40"	RO2518

2.5" 1000 PSI, 1/4" FPT End Port

Description	Part #
2.5" X 14"	RO2531
2.5" X 40"	RO2525
2.5" X 80"	RO2526
2.5" X 120"	RO2527

4" 300 PSI, 3/4" FPT End Port

Description	Part #
4" X 14"	RO4039
4" X 21"	RO4040
4" X 40"	RO4031
4" X 80"	RO4032
4" X 120"	RO4033
4" X 160"	RO4034
4" X 200"	RO4035
4" X 240"	RO4036

4" 300 PSI, 3/4" Victaulic Side Port

Description	Part #
4" X 14"	RO4049
4" X 21"	RO4050
4" X 40"	RO4041
4" X 80"	RO4042
4" X 120"	RO4043
4" X 160"	RO4044
4" X 200"	RO4045
4" X 240"	RO4046

4" 400 PSI, 3/4" FPT End Port

Description	Part #
4" X 14"	RO4069
4" X 21"	RO4070
4" X 40"	RO4061
4" X 80"	RO4062
4" X 120"	RO4063
4" X 160"	RO4064
4" X 200"	RO4065
4" X 240"	RO4066

4" 400 PSI, 3/4" Victaulic Side Port



Description	Part #
4" X 14"	RO4079
4" X 21"	RO4080
4" X 40"	RO4071
4" X 80"	RO4072
4" X 120"	RO4073
4" X 160"	RO4074
4" X 200"	RO4075
4" X 240"	RO4076

4" 600 PSI, 3/4" FPT End Port

Description	Part #
4" X 21"	RO4100
4" X 40"	RO4091
4" X 80"	RO4092
4" X 120"	RO4093
4" X 160"	RO4094
4" X 200"	RO4095
4" X 240"	RO4096



4" 600 PSI, 3/4" Victaulic Side Port

Description	Part #
4" X 21"	RO4110
4" X 40"	RO4101
4" X 80"	RO4102
4" X 120"	RO4103
4" X 160"	RO4104
4" X 200"	RO4105
4" X 240"	RO4106

4" 1000 PSI, 3/4" FPT End Port

Description	Part #
4" X 21"	RO4130
4" X 40"	RO4121
4" X 80"	RO4122
4" X 120"	RO4123
4" X 160"	RO4124
4" X 200"	RO4125
4" X 240"	RO4126

8" 300 PSI, 1 1/2" SS. Victaulic Side Port

Description	Part #
8" X 40"	RO80036
8" X 80"	RO80037
8" X 120"	RO80038
8" X 160"	RO80039
8" X 200"	RO80040
8" X 240"	RO80041

8" 300 PSI, 1 1/2" SS. Victaulic End Port

Description	Part #
8" X 40"	RO80050
8" X 120"	RO80052

8" 600 PSI, 1 1/2" SS. Victaulic Side Port

Description	Part #
8" X 40"	RO80106
8" X 120"	RO80108

8" 600 PSI, 1 1/2" SS. Victaulic End Port

Description	Part #
-------------	--------



A & M

All Vessel Housings are made of corrosion resistant filament wound fiberglass reinforced epoxy tubing, with acrylic urethane outer coating.

8" X 40"	RO80120
8" X 120"	RO80122

8" 1000 PSI, 1 1/2" SS. Victaulic Side Port

Description	Part #
8" X 80"	RO80142
8" X 240"	RO80146

8" 1000 PSI, 1 1/2" SS. Victaulic End Port

Description	Part #
8" X 40"	RO80155
8" X 120"	RO80157
8" X 240"	RO80160

A & M

Contenedores de Membrana de PVC



PVC Membrane Housings

Description	Part #
2.0" X 26" PVC; U-PIN	PV-2026
2.5" X 14" PVC; U-PIN	PV-2514
2.5" X 21" PVC; U-PIN	PV-2521
2.5" X 40" PVC; U-PIN	PV-2540
4.0" X 14" PVC; U-PIN	PV-4014NS
4.0" X 21" PVC; U-PIN	PV-4021NS
4.0" X 40" PVC; U-PIN	PV-4040NS
4.0" X 80" PVC; U-PIN	PV-4080NS
4.0" X 120" PVC; U-PIN	PV-40120NS
4.0" X 160" PVC; U-PIN	PV-40160NS

Contenedores de Membrana de Acero Inoxidable



Stainless Steel Commercial Housings

Description	Part #
2.5X14 304 SS VESSEL	SV2514.1
2.5X21 304 SS VESSEL-D	SV2521.1
2.5X40 304 SS VESSEL	SV2540.1
4"X14"316-SS VESSEL-D	SV4014.1
4"X21"316-SS VESSEL-D	SV4021.1
4"X25"316-SS FILMTEC E/P U-PIN	SV4025.1
4"X40"316 SS FILMTEC E/P U-PIN	SV4040.1
4"X120"316 SS FILMTEC EP U-PIN	SV40120.1

Stainless Steel Housing



Puragua Systems, Inc.

💧 Servicio Personalizado

💧 Servicio En Español

Información y Precios: